



Nebraska Public Power District

Always there when you need us

November 9, 2018

Gordon Fassett
Nebraska Department of Natural Resources
301 Centennial Mall South
PO Box 94676
Lincoln, NE 68509

Dear Mr. Fassett:

RE: Recharge Analysis for Temporary appropriations A-19552 and A-19553

Background

On August 9, 2017, the Nebraska Department of Natural Resources approved applications A-19552, Gothenburg Canal, and A-19553, Dawson County Canal, for recharge activities. These temporary appropriations expired one year from the order date. One condition included in each of the water appropriations was:

13. Within six months after the final date of diversion under this temporary permit, the appropriator shall file a map that depicts where the water was routed and will provide in-depth quantitative analysis to the Department of the recharge achieved by utilizing the Gothenburg/Dawson County Canal, including all data provided for any contractual arrangements between NPPD, the Department or other persons.

With this letter, the Nebraska Public Power District (NPPD) intends to fulfill the provision. NPPD has a contract with the Platte River Recovery Program (PRRIP) for the recharge from the Dawson County and Gothenburg Canals and the information included in this report will be provided to PRRIP. Determination of the recharge at each of the canals is made from data collected including river diversions recorded at the canal head gates (NDNR provisional data) and NPPD used staff gages to determine diversions into canal laterals from the main canal and the water spilled from the canal systems. This data was used to determine the amount of water recharged.

Fall 2017 Operations

Gothenburg Canal

The Gothenburg Canal did not operate for groundwater recharge in the fall of 2017.

Dawson County Canal

The Dawson County Canal ceased operating for irrigation needs on September 8, 2017. Subsequently, water was diverted into the canal for groundwater recharge from October 4-5, 7-11 and November 27-December 19.

COLUMBUS GENERAL OFFICE

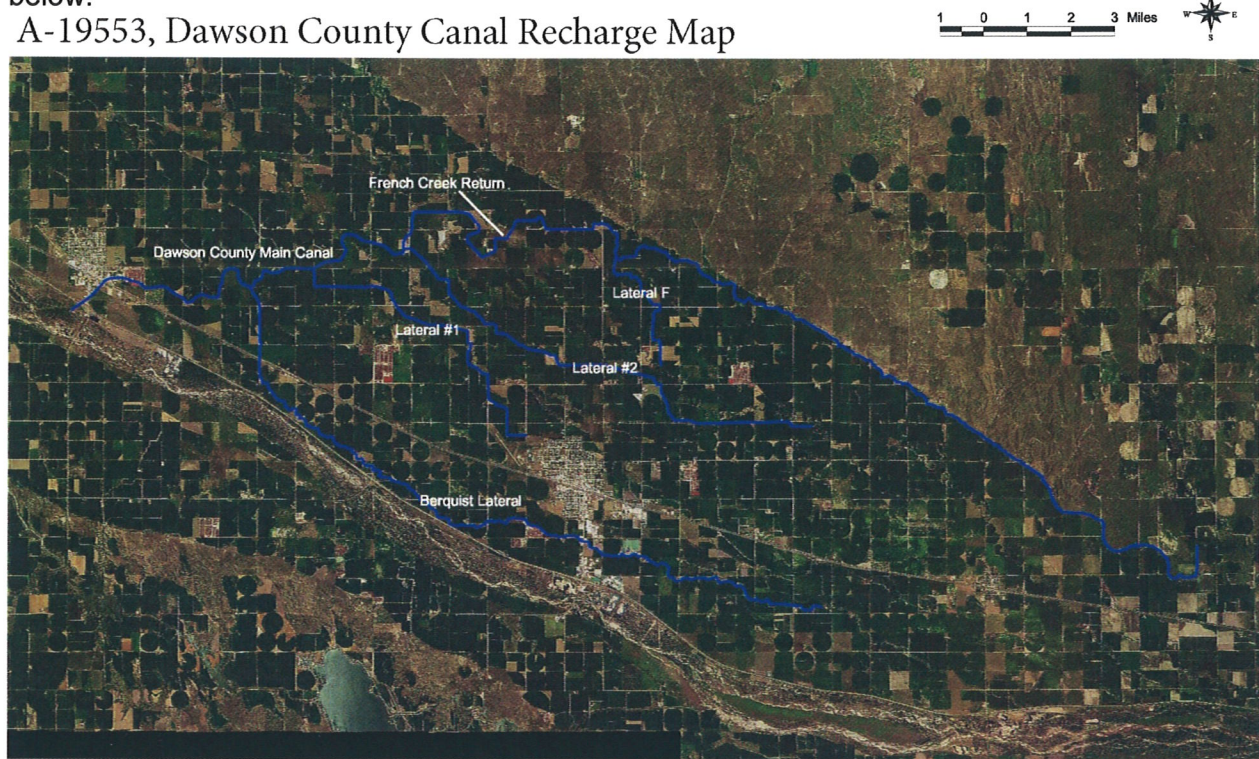
1414 15th St. / P. O. Box 499 / Columbus, NE 68602-0499
Telephone: (402) 564-8561- / Fax: (402) 563-5511
www.nppd.com

There was a total of 3,594 AF of water recharged. The Dawson County Canal used various laterals during the period of groundwater recharge operations. The following summarizes the operation for groundwater recharge:

[illegible]

The portions of canal which recharged groundwater during this period can be found on the map below.

A-19553, Dawson County Canal Recharge Map



Spring 2018 Operations

Gothenburg Canal

The Gothenburg Canal did not operate for groundwater recharge in the spring of 2018.

Dawson County Canal

The Dawson County Canal did not operate for groundwater recharge in the spring of 2018.

Sincerely,

A handwritten signature in black ink, appearing to read 'Joe L. Citta, Jr.'.

Joe L. Citta, Jr.
Director of Corp. Environmental & Water Resources